



QUALIFIED CENSUS TRACTS

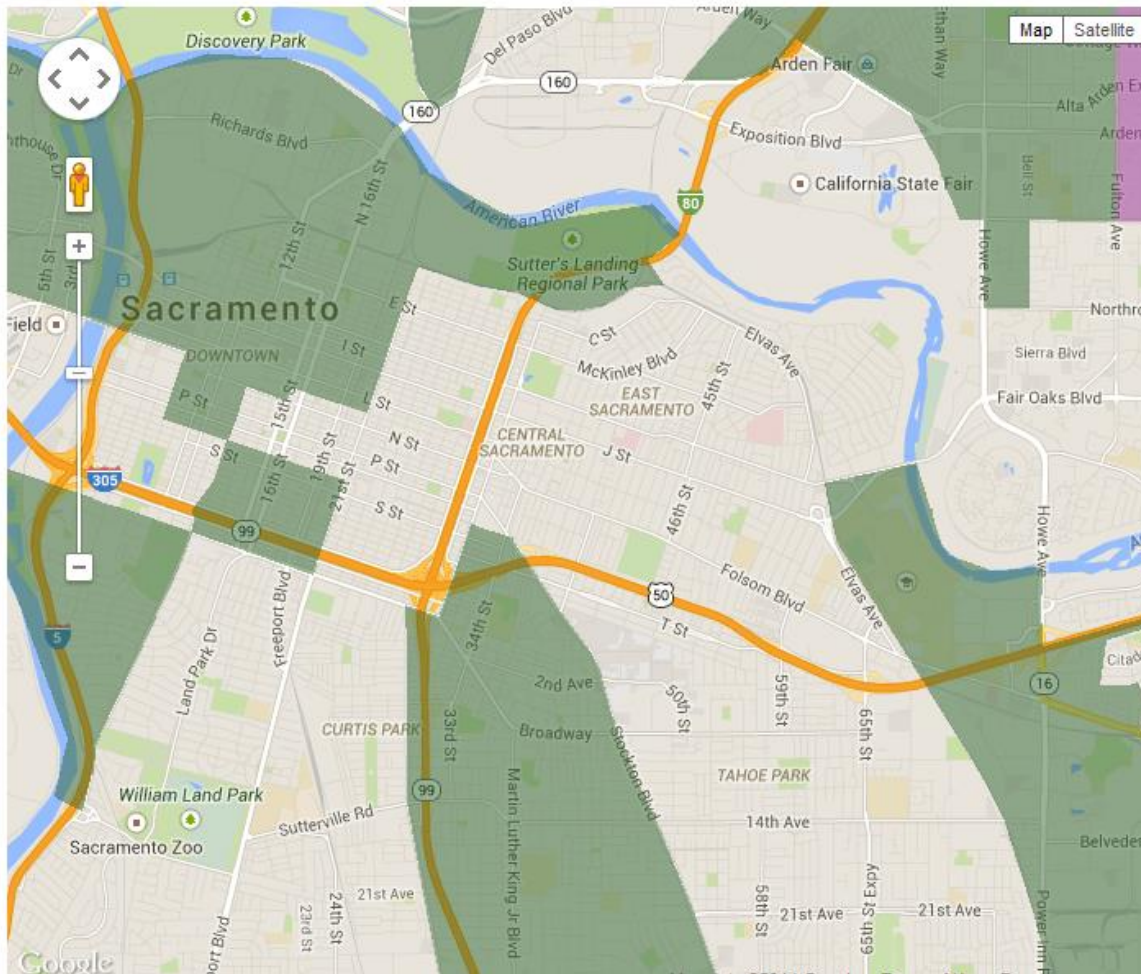
The 2015 Qualified Census Tracts (QCTs) are effective January 1, 2015. The 2015 designation uses data from the 2010 Decennial Census and three releases of 5-year tabulations from the American Community Survey (ACS): 2006–2010; 2007–2011; and 2007–2012. The revised designation methodology using three years of ACS data is explained in the Federal Register notice published October 3, 2014 (http://www.huduser.org/portal/Datasets/QCT/DDA2015_Notice.pdf).

Enter an Address, city, state or tract Go California Sacramento Go

Map Options : Clear | Reset

QCT Legend: — Tract Outline ■ Qualified Census Tracts (2014 Only) ■ Qualified Census Tracts (2015 Only) ■ Qualified Census Tracts (2014 & 2015) LIHTC Project

QCT Options
13 Current Zoom Level
 Show Tracts Outline (Zoom 11+)
 Show LIHTC Projects (Zoom 11+)
 Color Qualified Tracts (Zoom 7+)



Map Options : Clear | Reset

QCT
Legend:

Tract
Outline

Qualified Census
Tracts (2014 Only)

Qualified Census
Tracts (2015 Only)

Qualified Census
Tracts (2014 & 2015)

LIHTC
Project

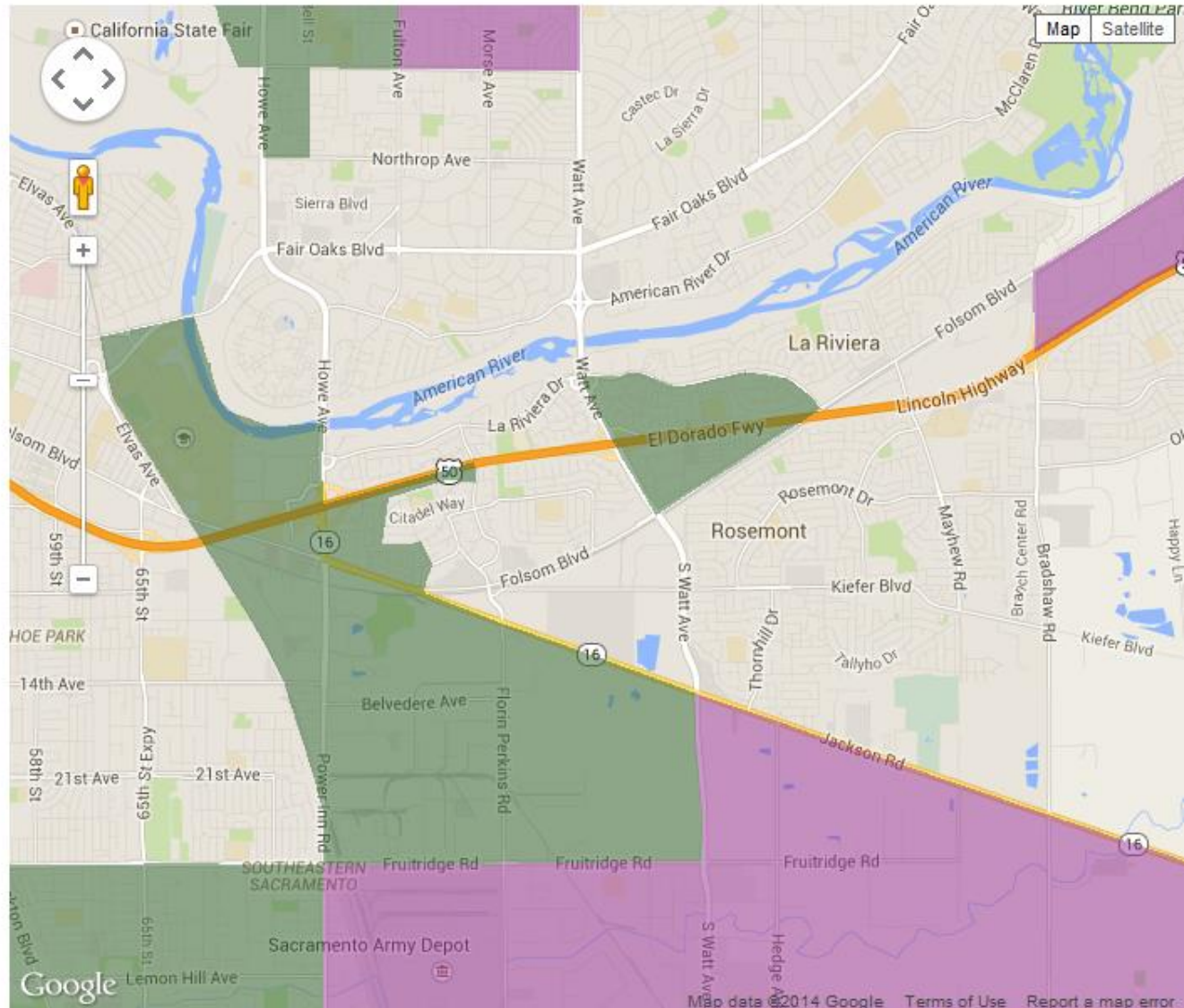
QCT Options

13 Current Zoom Level

Show Tracts Outline (Zoom 11+)

Show LIHTC Projects (Zoom 11+)

Color Qualified Tracts (Zoom 7+)



Map Options : Clear | Reset

QCT Legend:

Tract Outline

Qualified Census Tracts (2014 Only)

Qualified Census Tracts (2015 Only)

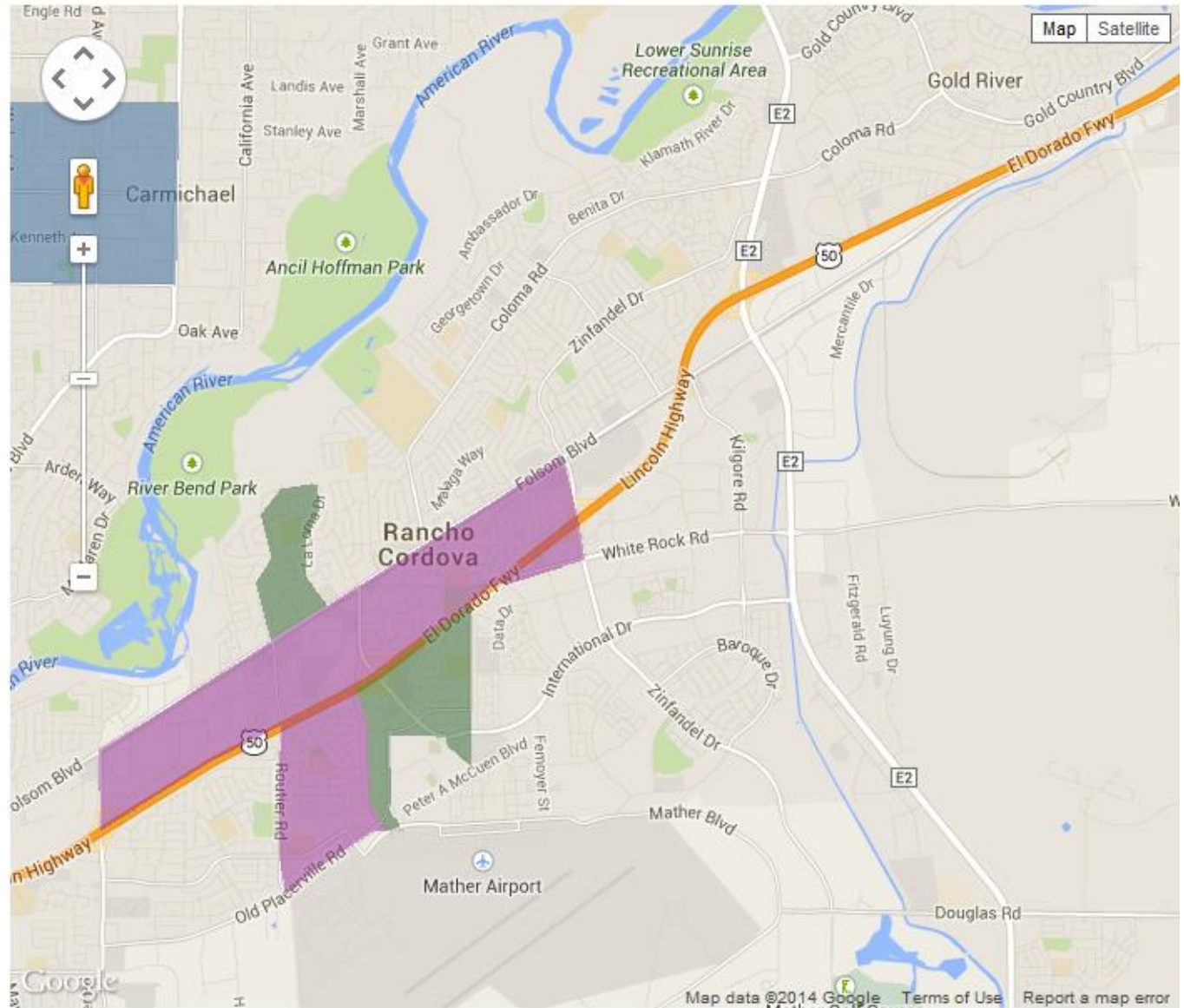
Qualified Census Tracts (2014 & 2015)

LIHTC Project

QCT Options

13 Current Zoom Level

- Show Tracts Outline (Zoom 11+)
- Show LIHTC Projects (Zoom 11+)
- Color Qualified Tracts (Zoom 7+)



Map Options : Clear | Reset

QCT
Legend:

Tract
Outline

Qualified Census
Tracts (2014 Only)

Qualified Census
Tracts (2015 Only)

Qualified Census
Tracts (2014 & 2015)

LIHTC
Project

QCT Options

13 Current Zoom Level

- Show Tracts Outline (Zoom 11+)
- Show LIHTC Projects (Zoom 11+)
- Color Qualified Tracts (Zoom 7+)

